

# TRACT 6102

CONSISTING OF SIX SHEETS  
EDEN TOWNSHIP  
ALAMEDA COUNTY CALIFORNIA  
AUGUST 1998 SCALE: 1"=40'



## MARK THOMAS & CO. INC.

CONSULTING CIVIL ENGINEERS & MUNICIPAL PLANNERS  
OFFICES IN SAN JOSE, CUPERTINO, SALINAS, SACRAMENTO, AND FRENCH  
91 ARCHER STREET, SAN JOSE, CALIF. 95112 (408) 453-5373

### LEGEND

- ⊙ INDICATES ALAMEDA CO. STANDARD STREET MONUMENT FOUND AS NOTED
- ⊙ INDICATES ALAMEDA CO. STANDARD STREET MONUMENT SET
- INDICATES IRON PIPE OR MONUMENT FOUND AS NOTED
- INDICATES 3/4" IRON PIPE SET RCE 14392
- INDICATES FENCE CORNER POST OR HUB FOUND AS NOTED
- PUE INDICATES PUBLIC UTILITY EASEMENT
- SSE INDICATES SANITARY SEWER EASEMENT
- SDE INDICATES STORM DRAIN EASEMENT
- PSSE INDICATES PRIVATE SANITARY SEWER EASEMENT
- PSDE INDICATES PRIVATE STORM DRAIN EASEMENT
- EVAE INDICATES EMERGENCY VEHICLE ACCESS EASEMENT
- EBMUD INDICATES EAST BAY MUNICIPAL UTILITY DISTRICT
- M-M MONUMENT TO MONUMENT
- (R) RADIAL

### NOTES

THE HEAVY BROKEN LINE INDICATES THE BOUNDARY OF LAND SUBDIVIDED BY THIS MAP. THE AREA WITHIN THE BOUNDARY IS 13.71 ACRES.  
ALL DISTANCES AND DIMENSIONS ARE SHOWN IN FEET AND DECIMALS THEREOF.  
ALL DIMENSIONS FROM MONUMENT LINE TO PROPERTY LINE RETURNS ARE MEASURED PERPENDICULAR TO MONUMENT LINES.

### TRACT 4523 (127-M-15)

(N81°23'49"E 734.82) (E)  
(N81°19'54"E 738.49) (H)  
(N77°33'34"E 749.10) (K)  
(N77°33'34"E 795.75) (L)

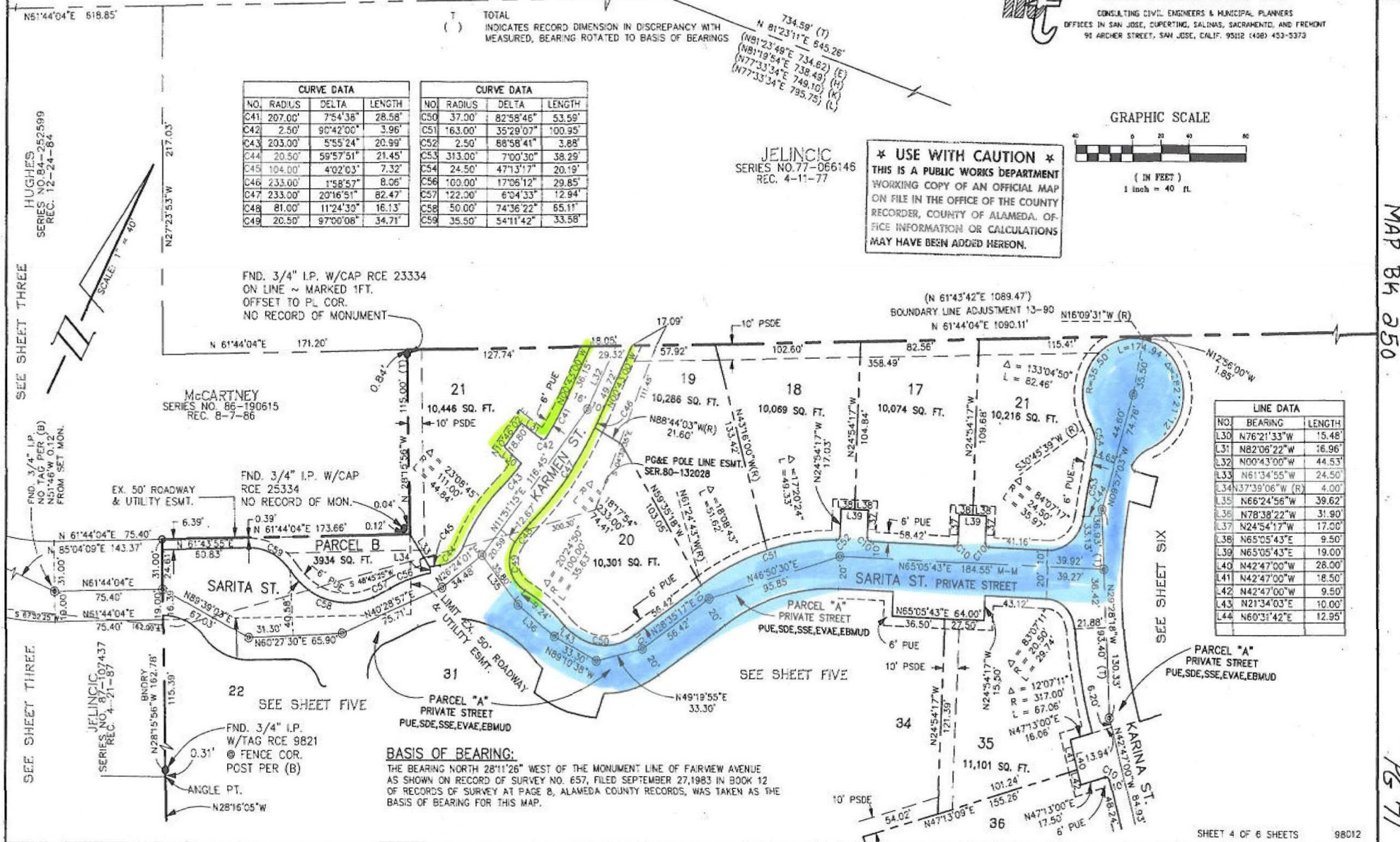
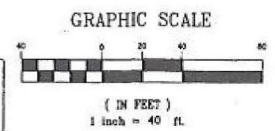
N 61°44'04"E 650.35'

TOTAL  
( ) INDICATES RECORD DIMENSION IN DISCREPANCY WITH MEASURED, BEARING ROTATED TO BASIS OF BEARINGS

CURVE DATA				CURVE DATA			
NO.	RADIUS	DELTA	LENGTH	NO.	RADIUS	DELTA	LENGTH
C41	207.00'	7°54'38"	28.58'	C50	37.00'	82°58'46"	53.59'
C42	2.50'	90°42'00"	3.96'	C51	163.00'	35°29'07"	100.95'
C43	203.00'	5°55'24"	20.99'	C52	2.50'	88°58'41"	3.88'
C44	20.50'	59°57'51"	21.45'	C53	313.00'	7°00'30"	38.29'
C45	104.00'	4°02'03"	7.32'	C54	24.50'	47°13'17"	20.19'
C46	233.00'	1°58'57"	8.06'	C56	100.00'	17°06'12"	29.85'
C47	233.00'	20°16'51"	82.47'	C57	122.00'	6°04'33"	12.94'
C48	81.00'	11°24'39"	16.13'	C58	50.00'	74°36'22"	65.11'
C49	20.50'	97°00'06"	34.71'	C59	35.50'	54°11'42"	33.58'

JELINCIC  
SERIES NO. 77-066146  
REC. 4-11-77

**\* USE WITH CAUTION \***  
THIS IS A PUBLIC WORKS DEPARTMENT  
WORKING COPY OF AN OFFICIAL MAP  
ON FILE IN THE OFFICE OF THE COUNTY  
RECORDER, COUNTY OF ALAMEDA. OFFICE  
INFORMATION OR CALCULATIONS  
MAY HAVE BEEN ADDED HEREON.



LINE DATA		
NO.	BEARING	LENGTH
L30	N76°21'33"W	15.48'
L31	N82°06'22"W	16.96'
L32	N00°43'00"W	44.53'
L33	N61°34'55"W	24.50'
L34	S37°39'06"W (R)	4.00'
L35	N66°24'56"W	39.62'
L36	N78°38'22"W	31.90'
L37	N24°54'17"W	17.00'
L38	N65°05'43"E	9.50'
L39	N65°05'43"E	19.00'
L40	N42°47'00"W	28.00'
L41	N42°47'00"W	18.50'
L42	N42°47'00"W	9.50'
L43	N21°34'03"E	10.00'
L44	N60°31'42"E	12.95'

**BASIS OF BEARING:**  
THE BEARING NORTH 28°11'26" WEST OF THE MONUMENT LINE OF FAIRVIEW AVENUE AS SHOWN ON RECORD OF SURVEY NO. 657, FILED SEPTEMBER 27, 1983 IN BOOK 12 OF RECORDS OF SURVEY AT PAGE 8, ALAMEDA COUNTY RECORDS, WAS TAKEN AS THE BASIS OF BEARING FOR THIS MAP.